

Best of Contemporary Arts

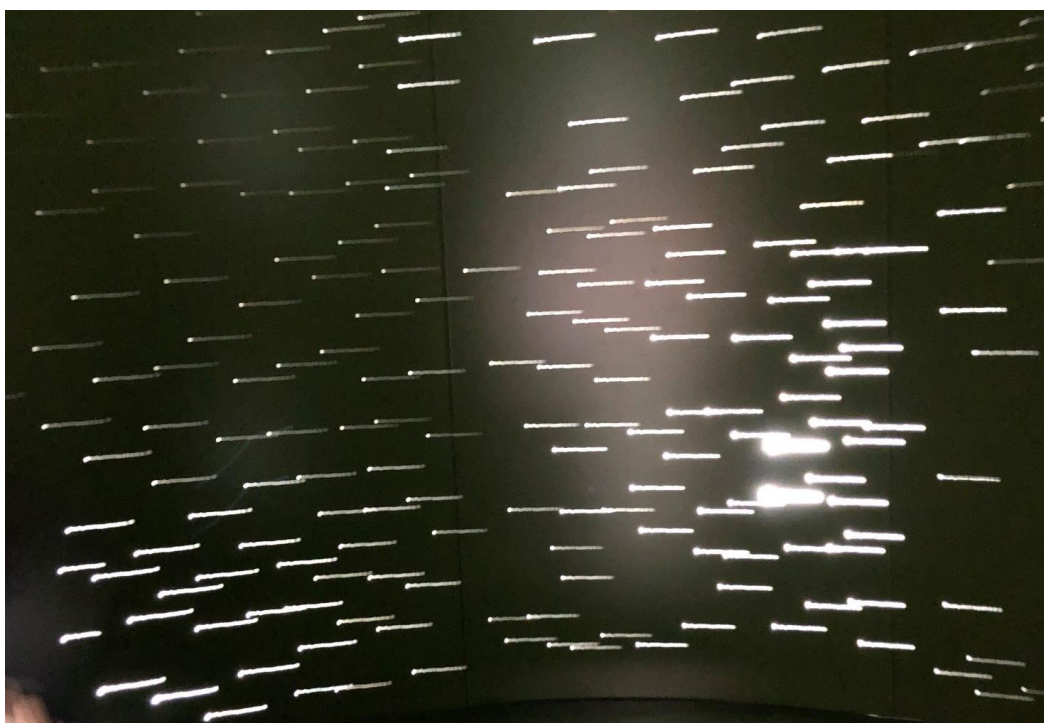
Tokyo – Kobuchizawa (Yamanashi) – Matsumoto (Nagano) –
Uonuma (Niigata) – Kanazawa – Naoshima –
Okayama – Hakone – Tokyo

(14 nights 15 days)

Art enthusiasts will be enthralled with the variety and quality of Museums, Galleries & Installations that Japan has to offer. This itinerary is suited for both first-time & returning visitors and can be further tailor-made according to your personal interests & passions.

A short stay in Tokyo will introduce the infinite possibilities of the capital's bustling Art Scene. Then immerse in the lesser-known prefectures of Nagano and Niigata, where even in the deep countryside, International and Japanese Artists can be found. In Kanazawa, the focus is on a world-class museum, famed for its architecture and exhibitions.

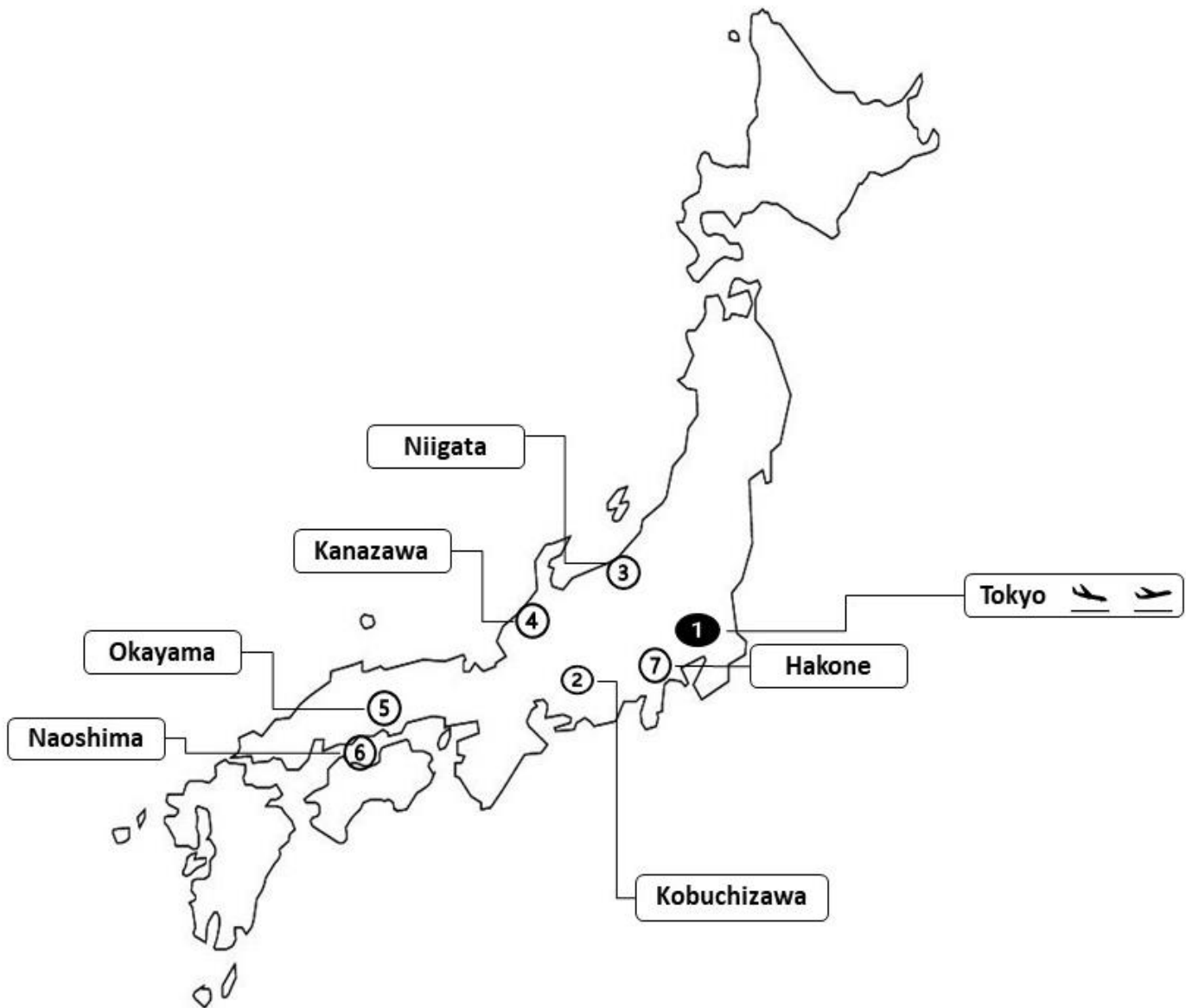
South of Okayama, one can only be impressed with the once sleepy the Seto Inland Sea, now an internationally acclaimed hub of arts & architecture. Wrap-up your journey with Hakone, where Art blends with the breathtaking landscape, before returning to Tokyo.



Your itinerary at a Glance

Day	Program	Accommodation
1	Arrive in NRT	Park Hyatt Tokyo
2	Tokyo	Park Hyatt Tokyo
3	Tokyo	Park Hyatt Tokyo
4	Move to Yamanashi	Hotel Key Forest Hokuto
5	Move to Niigata via Nagano	Satoyama Jujo
6	Niigata	Satoyama Jujo
7	Move to Kanazawa	Hyatt Centric Kanazawa
8	Move to Okayama	Ryokan Kurashiki
9	Okayama - Day trip to Inujima	Ryokan Kurashiki
10	Move to Naoshima	Benesse House
11	Naoshima- Day trip to Teshima	Benesse House
12	Move to Hakone	Hyatt Regency Hakone Resort & Spa
13	Hakone	Hyatt Regency Hakone Resort & Spa
14	Back to Tokyo	Park Hyatt Tokyo
15	Departure	

Your Travel Map



Detailed itinerary

Day 1, Arrival in Narita International Airport

After arriving at **Narita International Airport** and completing immigration formalities, you will be greeted by your **English Speaking Driver** at the arrival hall, and then transfer in a private vehicle to your accommodation in Tokyo.



Park Hyatt Tokyo



Famed for its appearance in the movie “Lost In Translation,” the hotel Park Hyatt Tokyo is an elegant oasis of space and calm that is situated in the heart of Shinjyuku, Tokyo’s vibrant business and entertainment district. The 52-storey Shinjyuku Park Tower affords stunning views of Tokyo and the Kanto Plain all the way to Mount Fuji.

Overnight at Park Hyatt Tokyo

Day 2, Tokyo

Meet with your **English Speaking Guide** at 10:00 am and leave for Tokyo city excursion.

Visit **Roppongi area**. **Issey Miyake's 21_21 DESIGN SIGHT**, “born as a venue to redirect our eyes to everyday things and events, and create various proposals and communicate numerous discoveries from the design point of view. As a place where visitors can be exposed to the pleasures of design and have new experiences filled with surprises, 21_21 DESIGN SIGHT focuses on exhibitions and runs a diversified program that includes talks and workshops”.



Faithful to the belief that each of the world's cultures must be accorded equal importance, the **Mori Art Museum** takes an open attitude in introducing the newest art form all over the world, with its key emphasis placed on the concepts of being “contemporary” and “international”.

Move to Shinagawa for another contemporary art exploration at **Terrada Art Complex**.

A base of a diverse range of art forms that Warehouse TERRADA brings together to Tennoz Isle, making it a hotspot for the production of artistic culture. Current occupants include: TAC GALLERY SPACE, TERRADA ART ASSIST; TAC ART STUDIO, a studio complex for artists; as well as a satellite campus for a university course which educates future professionals in restoration and preservation science.



Finish the touring by 18:00

Overnight at Park Hyatt Tokyo

Day 3, Tokyo

Meet with **English speaking guide** at **10:00am**. Today, you will have exclusive moments – **contemporary arts visit with art expert!**

Our connections in the thriving Tokyo art scene enable us to offer encounters with experts in different fields for art amateurs & collectors. Whether a tour of Contemporary Art Galleries led by an art expert, or the private Viewing of specific Artwork at an Art Gallery privatized for the occasion, each experience is customized based on clients' specific tastes and requirements.



After experience, you will go back to the hotel and finish the touring by **18:00**.

Overnight at Park Hyatt Tokyo

Day 4, Move to Yamanashi

Meet with **English Speaking Guide** at **9:00am** and move to Shinjuku station in a chartered vehicle to catch a train bound for Yamanashi.

(Suggested Train Schedule)

Limited Express Azusa #13 / Shinjuku 10:00 – 11:52 Kobuchizawa



Upon arrival at Kobuchizawa, you will start an exploration of **Kiyoharu Art Village**.

The colony constructs or relocates buildings designed by famous architects and puts them on display. The Kiyoharushirakaba Museum also hosts a variety of different exhibitions. In addition, the colony enables visitors to enjoy the changing seasons and nature, such as the cherry trees of the Kiyoharu Art Colony, which have been designated a natural treasure of Yamanashi Prefecture. A unique tearoom in an amazing tree house ranked in Top 10 precarious building in the world by TIME.



THE REAL JAPAN

Move to **The Nakamura Keith Haring's Collection Museum**, The first and only private museum in the world to exclusively house a collection of artwork by Keith Haring, who took 80's American art scene by storm. The owner, Dr. Kazuo Nakamura's collection of Keith Haring's artwork now consists of about 200 pieces, which he has been collecting since 1988.



Move to your accommodation in the area and check-in by **17:00**.

Hotel Key Forest Hokuto

Designed by award-winning architect Atsushi Kitagawara, Hotel Keyforest Hokuto is inspired from the works of artist Keith Haring and the primitive artworks excavated in Yamanashi Prefecture. The Avant-garde architecture and carefully selected furniture offer a time transcending space while breath-taking view of the Yatsugatake Mountains from the window is an inspiring work of art throughout four seasons.



Overnight at Hotel Key Forest Hokuto

Day 5, Move to Niigata

Check-out the hotel and move to Nagano station via Matsumoto & Chino, another interesting places for contemporary art.

After about 30mins drive by car, you reach to Chino area where you find **unique architectures by Terunobu Fujimori** is a Japanese architect and architectural historian that is famous for his unique architectural works characterized by eccentricity and experimental use of natural materials. There are the Jinchokan Moriya Historical Museum, Terunobu's first major project and a blend between ancient & modern techniques. A little further, three unique tea-houses stand in the middle of a field.



After short stop, you will continue to Matsumoto (about an hour drive in a normal traffic condition). Upon arrival in Matsumoto, you drop by **Matsumoto city museum of art** where houses and exhibits art works by Yayoi Kusama.



Then you will continue to Nagano station (about an hour drive in a normal traffic condition). You will catch a train bound for Niigata.

(Suggested Train Schedule)

Bullet Train Hakutaka #566 / Nagano 15:20 – 16:00 Takasaki

at Takasaki station, you will change train to...

Bullet Train Toki #329 / Takasaki 16:31 – 17:00 Echigo Yuzawa

Upon arrival at Echigo Yuzawa station, you will transfer in a private chartered vehicle to your accommodation in Niigata.

Satoyama Jujo

Created by *Jiyujin*, a magazine that presents the content about nature, creativity, and organic lifestyle and is designed to “redefine luxury”. The hotel strives to convey 10 stories—by way of art, architecture, design, organic cuisine, and more—that are unique to this location and that will engage guests and lead them to new experiences and discoveries.

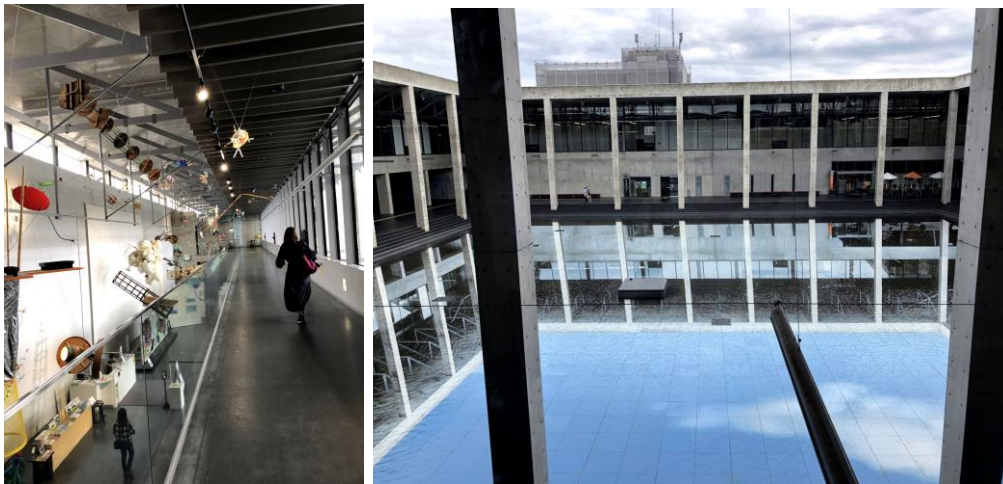


Overnight at Satoyama Jujo

Day 6, Niigata

Meet with your **English Speaking Guide** at **9:30 am** and leave for exploration in **Echigo Tsumari Art Field**, one of the largest art festivals in the world as well as the pioneer of regional art festivals taking place across Japan. It has provided an alternative way to explore satoyama following artworks as guiding lights which has received a great attention both within and outside Japan as a leading practice of community building by art.

The Echigo-Tsumari Satoyama Museum of Contemporary Art / KINARE is a space in which one can actually sense the intricate interplay of the world, modernity, rural life and satoyama culture.



Matsudai NO BUTAI is an innovative platform for connecting art and agriculture, comprising of a visitor information center, gallery, restaurant and museum shop. Besides of NO BUTAI, several another art works are in walking distance.



House of Light is experimental work, where people can experience the artist's art world, is architecture without a parallel to anywhere in the world. The place was conceived as a guesthouse for meditation, which James Turrell took the concept from Junichiro Tanizaki's essay *In Praise of Shadows*. Although there is very minimum service, it is possible to overnight at this place to immerse yourself into Turrell's world.



There are various of open-air art works dotted around the area...

Back to your accommodation and finish the touring by 17:30.

Overnight at Satoyama Jujo

Day 7, Move to Kanazawa

Check out the accommodation and meet with your private guide. On the way to Jyoetsu Myoko station (total about 1.5 hours drive in a normal traffic condition), enjoy a morning exploration of Echigo Tsumari Art filed to appreciate open-air art works.



Upon arrival at Joetsu You will catch a train bound for Kanazawa.

(Suggested Train Schedule)

Bullet Train Hakutaka #561 / Joetsu Myoko 13:17 – 14:20 Kanazawa

Upon arrival at Kanazawa, you will start exploration...

Visit **Kanazawa 21st Century Museum of Contemporary Art**, an architecturally striking building is designed by SANNA. The museum focuses on integrating the design of its space with the program and features many up-coming Japanese artists, as well as permanent installations by renowned international artists, such as Leandro Ehrlich or Anish Kapoor.



THE REAL JAPAN

There is also **KAMU Kanazawa**, is small cozy museum which is privately owned and operated by a local contemporary art collector. Despite of the size of the museum, its exhibitions are impressive such as a big installation by Leandro Erlich which dominates the grand floor.

After museum visit, you will move to your accommodation and check-in by **17:00**.

Hyatt Centric Kanazawa



Situated just seconds from the Kanazawa station, Hyatt Centric Kanazawa is the perfect spot from which to explore the authentic art, shops, restaurants and culture of Kanazawa. Experience this well-preserved historical city; renowned for its geisha and samurai districts as well as wonderful cuisine.

Overnight at Hyatt Centric Kanazawa

Day 8, Move to Okayama

Check out the accommodation and meet with your private guide. You will walk to Kanazawa station (just about 3 mins walk) to catch trains bound for Okayama.

(Suggested Train Schedule)

Limited Express Thundirbird #16 / Kanazawa 9:54 – 12:09 Kyoto

At Kyoto station, you will change your train to...

Bullet Train Nozomi #25 / Kyoto 12:46 – 13:47 Okayama

Upon arrival in Okayama, you will move to Kurashiki area which is about an hour drive in a normal traffic condition.

Upon arrival in Kurashiki, visit **Ohara House Katalyzer**. Historical building which is one of the numerous Important Cultural Assets but presents its exhibition in modern way and make it easy for people to drop by and exchange “past and future” as catalyzer of the area.



Also visit **Ohara Museum**, expands the collection to include both modern and contemporary art from the West and Japan, as well as pieces by artists who served Mingei Movement (Japanese Folk Art Movement).

After exploration, you will move to your accommodation in the area and check-in by 17:00.

Ryokan Kurashiki



(Images Only)

The ryokan was originally the home of a wealthy sugar merchant who outfitted the house with exquisite craftsmanship and fine antiques. With Ryokan Kurashiki as your base, you can explore the fascinating Bikan area and beyond, or simply stay at the ryokan, and let Okami and her friendly staff show you the timeless essence of Japanese hospitality.

Overnight at Ryokan Kurashiki

Day 9, Okayama – day trip to Inujima Island

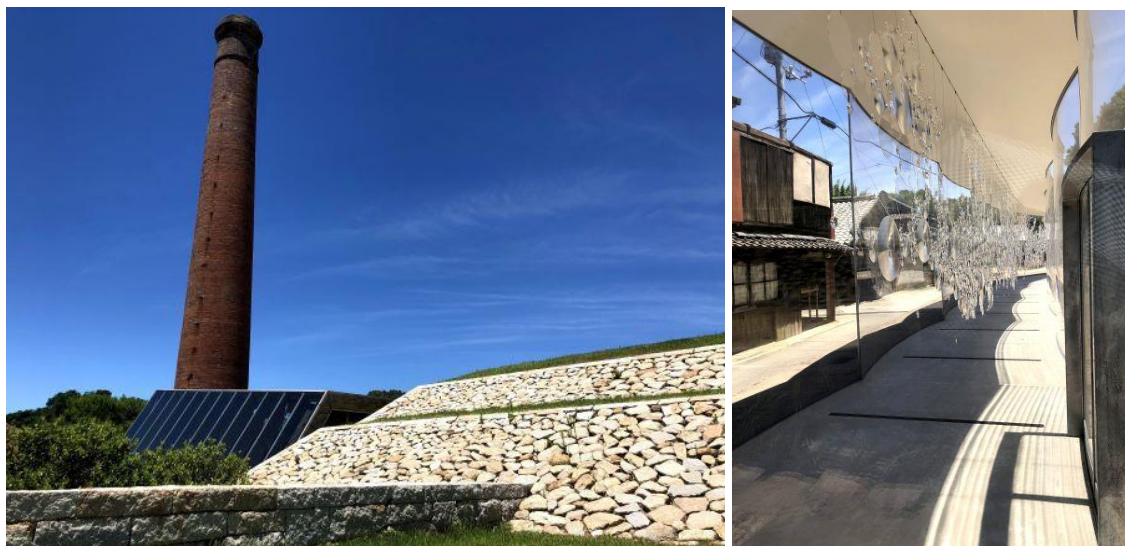
Meet with your private guide at **10:00am**. Today, you will leave for a day trip to Inujima Island and first transfer to Hoden port (about an hour drive in a normal traffic condition) to catch a ferry to the island.

(Suggested Ferry Schedule)

Ferry / Hoden 11:00 – 11:10 Inujima (Non Reserved)

Upon arrival at the island, you will explore around on your foot (Inujima island is small island and there is no public transportation available. Walking is best way to explore the island).

Inujima Seirenscho Art Museum This museum was built around the idea of "using what exists to create what is to be". Exhibited here are works created by Yukinori Yanagi who used Yukio Mishima as a motif, a vocal critique of Japan's modernization, together with the remodeled architecture designed by Hiroshi Sambuichi. By using the existing smokestacks and karami bricks from the refinery as well as solar, geothermal, and other natural energies, the architectural design minimizes the construction's environmental impact.



Also enjoy **Inujima "Art House Project"** : Inujima Art House Project was launched with the objective of inspiring the local community of Inujima, allowing them to experience the beautiful landscapes of everyday life and the familiar natural environments that extend beyond the artworks. Three galleries, F-Art House, S-Art House, and I-Art House, designed for special displays, and Nakanotani Gazebo (a rest area) were first opened on the island in 2010. In



2013, with the opening of two new galleries, A-Art House and C-Art House, works are shown at each venue and elsewhere around the village.

The galleries, scattered around the area, are constructed out of a diverse range of materials including roofing tiles and other components of old houses, transparent acrylic glass and aluminum that reflects the landscape.

After exploration, you will catch a ferry back to Okayama

(Suggested Ferry Schedule)

Ferry / Inujima 15:25 – 15:35 Hoden (Non Reserved)

Upon arrival, you will go back to the ryokan by 17:00.

Overnight at Ryokan Kurashiki

Day 10, Move to Naoshima Island

After checking out the ryokan, you will meet with your private guide at **10:00am** and move to Uno port in a private chartered vehicle (about 45mins drive in a normal traffic condition) to catch a ferry to Naoshima, as known as “Museum Island”.

(Suggested Ferry Schedule)

Ferry / Uno 11:00 – 11:20 Miyaura (Naoshima) (Non Reserved)

Upon arrival at Naoshima Islands, you will leave straight for Naoshima exploration by a private chartered vehicle.

For the visiting order and sites, you can discuss it with your guide on the day on the spot.
For example...



Benesse House, the luxurious accommodation deigned by Tasao Ando, where guests are staying is not only a hotel, but also a contemporary art museum. Site-specific works and the permanent collection are housed in the museum. Outdoor artworks are on the museum site, and temporary exhibition are held at the Ping Pong Gallery in Honmura.



Chichu Museum

Opened in 2004 as a place where architecture and artworks are closely and radically connected. The buiding, designed by Tadao Ando, is mostly buried underground except for apertures that let in natural light. The “exterior” is a garden, which is composed of artworks and the ridgeline of the surrounding hills.



Lee Ufan Museum

Opened June 2010 and positioned in isolation in a valley surrounded by mountains and sea, the museum offers a harmony between nature, architecture, and art, where visitors will be offered an opportunity to return to their original natures and to find time for quiet reflection in a society overflowing with material goods.

THE REAL JAPAN



The Art House Project is a series of permanent installations in the Honmura district. Artists transform vacant houses into artworks while taking into consideration in space, history, and memory accumulated at the site. Launched in 1998, with Kadoya, by Tatsuo Miyajima, the Art house Project is currently comprised of seven sites that are opened to the public.

After the touring, you will move to your accommodation in the island and check-in.

Benesse House

Once a sleepy island of fishing villages, Naoshima emerged from anonymity in 1992, when the Benesse Group chose it to establish a museum of contemporary art doubling as a hotel. Since then, the project has been enlarged and the island has become very fashionable. **Benesse House** is a highly original complex designed by Ando Tadao incorporating a museum and a hotel, based on the concept of coexistence between nature, architecture, and art. The hotel comprises four buildings: The Museum, Oval, Park, and Beach.



Overnight at Benesse House

Day 11, Naoshima Island – Day Trip to Teshima Island

Meet with your private guide and catch a courtesy shuttle provided by Benesse House to move to Uno port. Catch a ferry to Teshima Island, neighbor art island.

(Suggested Ferry Schedule)

Ferry / Miyanoura port 9:20 – 9:42 Teshima Island (Non Reserved)

Upon arrival in Teshima, you will start exploration in a private chartered vehicle.

For the visiting order and sites, you can discuss it with your guide on the day on the spot.
For example...

Teshima Art museum is stands on a hill on the island of Teshima overlooking the Inland Sea. Shaped like a drop of water, the museum lies in a corner of the spacious grounds surrounded by once-fallow rice terraces that have been restored with help from local residents. An Architect Ryue Nishizawa and artist Rei Naito united their both art & creative vision made its shape.



Les Archives du Coeur' by Christian Boltanski, compiles recordings of heartbeats from around the world for exhibition, you can listen, and record yours as an archive. This project is made up of three elements: an installation using recordings of heartbeats, a listening room where visitors are able to listen to archived recordings, and a recording room where their own heartbeats can be recorded.

The "Teshima Yokoo House", a collaboration between artist Tadanori Yokoo and architect Yuko Nagayama, was created by altering and renovating an old private house located in a hamlet in the leura District, facing the harbor that forms the entrance to Teshima Island. Making full use of the building's existing layout, the exhibition areas are divided into a "Main House," a "Warehouse," and an "Outhouse," displaying 11 two-dimensional works. Other features—a stone garden with a pond, and a cylindrical tower—are devoted to installations, so that the art spaces seem to expand symbolically to cover the entire site, making it a philosophical zone that



simultaneously calls to mind thoughts of both life and death.
There are also some open-air art installations in the island...

After exploration, you will catch a ferry back to Naoshima Island

(Suggested Ferry Schedule)

Ferry / Ieura Port 16:12 – 16:39 Miyanoura Port (Non Reserved)

Upon arrival at Miyanoura port, you will catch a courtesy shuttle provided by Benesse House to go back to the hotel.

Finish touring by **17:00**.

Overnight at Benesse House

Day 12, Move to Hakone

Check-out the hotel and meet with **English Speaking Assistant** at the lobby, where the front desk is at **10:45am**. You will also meet your chauffer and move to Miyanoura port.

(Ferry Schedule)

Miyanoura Port 11:10 – 11:30 Uno Port (Non Reserved)

The same chartered vehicle will transfer you to Okayama station and catch a train for Tokyo.

[Suggested Train Schedule]

Bullet Train Nozomi #24 / Okayama 12:58 – 14:34 Nagoya
change to **Bullet Train Kodama #732 / Nagoya 15:08 – 17:09 Odawara**

Upon arrival at Odawara station, transfer to your accommodation nearby and check-in.

Hyatt Regency Hakone Resort & Spa

Hyatt Regency Hakone is located in Gora area where you can access to major sights in Hakone. This is where you can feel the great combinations of Japanese traditional hospitality and western features.



Overnight at Hyatt Regency Hakone Resort & Spa

Note: A High-end Luxury Ryokan stay is also available.

Day 13, Hakone

Meet with your private guide at **10:00am** and leave for exploration by a private chartered vehicle.

Hakone is a volcanic national park near Mt. Fuji, the tallest and most famous mountain in Japan attracting more than 200,000 climbers every year.

Visit the unique **Hakone Open Air Museum**, where you can enjoy the balance of nature and art through a variety of sculptures in perfect harmony with picturesque views of the surrounding valley and mountains. Also take a look at the indoor galleries, including works from world famous artists including Rodin, Bourdelle, Miro, and one of the largest collections of British sculptor Henry Moore. There is also a Picasso Pavillion with a collection of over 300 pieces.



You will then visit **the Odawara Art Foundation** – The site is a hilly area covered with citrus trees in Enoura, in the Kataura district of Odawara. The facility was envisioned by contemporary artist Hiroshi Sugimoto as a forum for disseminating art and culture both within Japan and to the world, and will comprise a gallery space, a noh stage, the revived Tensho—an tea ceremony room, the restored Muromachi Period (c. 1338–1573) Meigetsu Gate, a strolling garden, and offices.

If time permits, you will reach to Izu area and visit **Clematis no Oka** which is about an hour drive from Odawara in a normal traffic condition. This is a sprawling art and garden complex located at the foothills of Mount Fuji and provides three art museums, a literary museum, gardens, restaurants, a teahouse and a cafe.

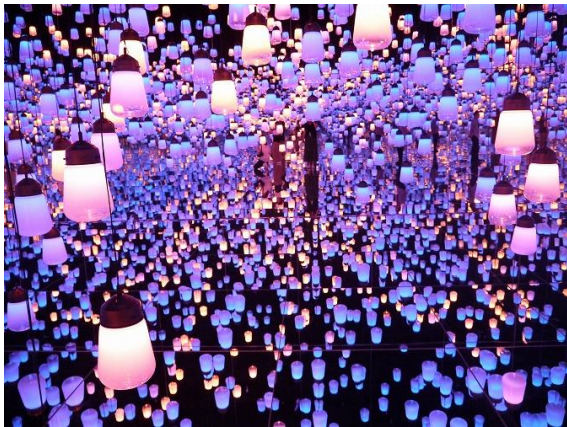
Back to your accommodation in Hakone by **18:00**

Overnight at Hyatt Regency Hakone Resort & Spa

Day 14, Back to Tokyo

Meet with your **English Speaking Guide** at **10:00 am** and head for Tokyo in a private chartered vehicle (about 1.5 hours drive in a normal traffic condition).

Upon arrival in Tokyo, you visit **teamLab Borderless** in Odaiba. This is a group of artworks that form one borderless world. Artworks move out of rooms, communicate with other works, influence, and sometimes intermingle with each other with no boundaries.



Then continue to **teamLab Planets** in Toyosu, is a museum where you walk through water. It consists of four vast exhibition spaces containing seven indoor artworks, plus one outdoor piece at the entrance for a total of eight works created by art collective teamLab.

Finish the touring by **18:00**

Overnight at Park Hyatt Tokyo

Day 15, Tokyo – Narita International Airport

Check out the hotel by 12:00 noon (official check-out time) and meet with **English Speaking Driver** at car porch of the hotel. You will then be transferred to **Narita International Airport** in a chartered vehicle.

Board your International flight for your journey back home & depart Japan.

Have a safe flight!



*****End of your Japan trip*****